

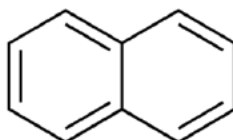
CAS No: 91-20-3 MSDS

MATERIAL SAFETY DATA SHEET (MSDS)

SECTION 1: Identification of the substance/mixture and of the company/undertaking

1.1. Product identifier

Product form : Substance
 :
 EC index no : 601-052-00-2
 EC no : 202-049-5
 CAS No : 91-20-3
 Product code : 04735
 Chemical structure :



1.2. Relevant identified uses of the substance or mixture and uses advised against

1.2.1. Relevant identified uses

Use of the substance/mixture : Laboratory chemicals, Manufacture of substances

1.2.2. Uses advised against

No additional information available

1.3. Details of the supplier of the safety data sheet

Labogens Fine Chem Industries
 1st Floor , Above Bank of India, Guru Vihar , Rahon Road,
 Ludhiana Pb. (141007)
 +91 9316777775, +91 7707855700
sales@labogens.com - www.Labogens.com

1.4. Emergency telephone number

Emergency number : +91 7707855700 (9:00am - 6:00 pm)

SECTION 2: Hazards identification

2.1. Classification of the substance or mixture

Classification according to Regulation (EC) No. 1272/2008 [CLP]

Flammable solids, H228
 Category 1
 Acute toxicity (oral), H302
 Category 4
 Carcinogenicity, Category H351
 2
 Hazardous to the aquatic H410
 environment — Chronic
 Hazard, Category 1

Full text of classification categories and H statements : see section 16

NAPHTHALENE FOR SYNTHESIS

Safety Data Sheet

Classification according to Directive 67/548/EEC or 1999/45/EC

Carc.Cat.3; R40

Xn; R22

N; R50/53

Full text of R-phrases: see section 16

Adverse physicochemical, human health and environmental effects

No additional information available

2.2. Label elements

Labelling according to Regulation (EC) No. 1272/2008 [CLP]

Hazard pictograms (CLP)



Signal word (CLP)

: Danger

Hazard statements (CLP)

: H228 - Flammable solid
H302 - Harmful if swallowed
H351 - Suspected of causing cancer
H410 - Very toxic to aquatic life with long lasting effects

Precautionary statements (CLP)

: P201 - Obtain special instructions before use
P308+P313 - IF exposed or concerned: Get medical advice/attention
P330 - Rinse mouth
P370+P378 - In case of fire: Use ... for extinction
P501 - Dispose of contents/container to ...

2.3. Other hazards

No additional information available

SECTION 3: Composition/information on ingredients

3.1. Substance

Name : NAPHTHALENE FOR SYNTHESIS
CAS No : 91-20-3
EC no : 202-049-5
EC index no : 601-052-00-2

Full text of R- and H-phrases: see section 16

3.2. Mixture

Not applicable

NAPHTHALENE FOR SYNTHESIS

Safety Data Sheet

SECTION 4: First aid measures

4.1. Description of first aid measures

- First-aid measures after inhalation : Remove person to fresh air and keep comfortable for breathing. Give oxygen or artificial respiration if necessary. If you feel unwell, seek medical advice.
- First-aid measures after skin contact : Wash skin with plenty of water. If skin irritation occurs: Get medical advice/attention.
- First-aid measures after eye contact : Remove contact lenses, if present and easy to do. Continue rinsing. Rinse cautiously with water for several minutes. If eye irritation persists: Get medical advice/attention.
- First-aid measures after ingestion : Rinse mouth. Call a POISON CENTER or doctor/physician if you feel unwell.

4.2. Most important symptoms and effects, both acute and delayed

- Symptoms/injuries after ingestion : Harmful if swallowed.
- Chronic symptoms : Suspected carcinogen.

4.3. Indication of any immediate medical attention and special treatment needed

Treat symptomatically.

SECTION 5: Firefighting measures

5.1. Extinguishing media

- Suitable extinguishing media : Dry chemical, CO₂, dry sand, or alcohol-resistant foam.
- Unsuitable extinguishing media : Do not use a heavy water stream.

5.2. Special hazards arising from the substance or mixture

- Fire hazard : Flammable solid.

5.3. Advice for firefighters

- Protection during firefighting : Do not attempt to take action without suitable protective equipment.

SECTION 6: Accidental release measures

6.1. Personal precautions, protective equipment and emergency procedures

6.1.1. For non-emergency personnel

- Emergency procedures : Evacuate unnecessary personnel.

6.1.2. For emergency responders

- Protective equipment : Use personal protective equipment as required.
- Emergency procedures : Ventilate area.

6.2. Environmental precautions

Very toxic to aquatic life with long lasting effects.

6.3. Methods and material for containment and cleaning up

- Methods for cleaning up : Clear up rapidly by scoop or vacuum.

6.4. Reference to other sections

No additional information available

SECTION 7: Handling and storage

7.1. Precautions for safe handling

- Precautions for safe handling : Obtain special instructions before use. Do not handle until all safety precautions have been read and understood.
- Hygiene measures : Do not eat, drink or smoke when using this product. Wash ... thoroughly after handling.

7.2. Conditions for safe storage, including any incompatibilities

- Storage conditions : Store in original container. Keep container tightly closed. Store in a dry place. Protect from moisture.

NAPHTHALENE FOR SYNTHESIS

Safety Data Sheet

7.3. Specific end use(s)

No additional information available

SECTION 8: Exposure controls/personal protection

8.1. Control parameters

No additional information available

8.2. Exposure controls

Hand protection	: protective gloves
Eye protection	: Chemical goggles or safety glasses
Skin and body protection	: Wear suitable protective clothing
Respiratory protection	: Wear appropriate mask

SECTION 9: Physical and chemical properties

9.1. Information on basic physical and chemical properties

Physical state	: Solid
Molecular mass	: 128.17 g/mol
Colour	: White scales.
Odour	: No data available
Odour threshold	: No data available
pH	: No data available
Relative evaporation rate (butylacetate=1)	: No data available
Melting point	: 77 °C
Freezing point	: No data available
Boiling point	: 218 °C
Flash point	: 80 °C
Auto-ignition temperature	: No data available
Decomposition temperature	: No data available
Flammability (solid, gas)	: No data available
Vapour pressure	: 0.03 hPa at 20°C
Relative vapour density at 20 °C	: 4.4
Relative density	: No data available
Density	: 1.2 g/cm³
Solubility	: Water: Insoluble in water
Log Pow	: 3.3

NAPHTHALENE FOR SYNTHESIS

Safety Data Sheet

Viscosity, kinematic	: No data available
Viscosity, dynamic	: No data available
Explosive properties	: No data available
Oxidising properties	: No data available
Explosive limits	: 0.009 - 0.059 vol %

9.2. Other information

No additional information available

SECTION 10: Stability and reactivity

10.1. Reactivity

Flammable solid.

10.2. Chemical stability

Stable under normal conditions of use.

10.3. Possibility of hazardous reactions

No additional information available

10.4. Conditions to avoid

Direct sunlight. Air contact. Moisture.

10.5. Incompatible materials

No additional information available

10.6. Hazardous decomposition products

No additional information available

SECTION 11: Toxicological information

11.1. Information on toxicological effects

Acute toxicity	: Oral: Harmful if swallowed.
Skin corrosion/irritation	: Not classified
Serious eye damage/irritation	: Not classified
Respiratory or skin sensitisation	: Not classified
Germ cell mutagenicity	: Not classified
Carcinogenicity	: Suspected of causing cancer.
Reproductive toxicity	: Not classified
Specific target organ toxicity (single exposure)	: Not classified
Specific target organ toxicity (repeated exposure)	: Not classified
Aspiration hazard	: Not classified

NAPHTHALENE FOR SYNTHESIS

Safety Data Sheet

Potential adverse human health effects and symptoms : Harmful if swallowed.

SECTION 12: Ecological information

12.1. Toxicity

Ecology - water : Very toxic to aquatic life with long lasting effects.

12.2. Persistence and degradability

NAPHTHALENE FOR SYNTHESIS (91-20-3)

Persistence and degradability	May cause long-term adverse effects in the environment.
-------------------------------	---

12.3. Bioaccumulative potential

NAPHTHALENE FOR SYNTHESIS (91-20-3)

Log Pow	3.3
---------	-----

12.4. Mobility in soil

No additional information available

12.5. Results of PBT and vPvB assessment

No additional information available

12.6. Other adverse effects

No additional information available

SECTION 13: Disposal considerations

13.1. Waste treatment methods

Product/Packaging disposal recommendations : Dispose of contents/container to ...

SECTION 14: Transport information

In accordance with ADR / RID / IMDG / IATA / ADN

14.1. UN number

UN-No. (ADR)	: 1334
UN-No. (IMDG)	: 1334
UN-No.(IATA)	: 1334
UN-No.(ADN)	: 1334
UN-No. (RID)	: 1334

14.2. UN proper shipping name

Proper Shipping Name (ADR)	: NAPHTHALENE, CRUDE
Proper Shipping Name (IMDG)	: NAPHTHALENE, CRUDE
Proper Shipping Name (IATA)	: NAPHTHALENE, CRUDE
Proper Shipping Name (ADN)	: NAPHTHALENE, CRUDE
Proper Shipping Name (RID)	: NAPHTHALENE, CRUDE

NAPHTHALENE FOR SYNTHESIS

Safety Data Sheet

Transport document description (ADR)	: UN 1334 NAPHTHALENE, CRUDE, 4.1, III, (E), ENVIRONMENTALLY HAZARDOUS
Transport document description (IMDG)	: UN 1334 NAPHTHALENE, CRUDE, 4.1, III, MARINE POLLUTANT/ENVIRONMENTALLY HAZARDOUS
Transport document description (IATA)	: UN 1334 NAPHTHALENE, CRUDE, 4.1, III, ENVIRONMENTALLY HAZARDOUS
Transport document description (ADN)	: UN 1334 NAPHTHALENE, CRUDE, 4.1, III, ENVIRONMENTALLY HAZARDOUS
Transport document description (RID)	: UN 1334 NAPHTHALENE, CRUDE, 4.1, III, ENVIRONMENTALLY HAZARDOUS

14.3. Transport hazard class(es)

ADR

Transport hazard class(es) (ADR)	: 4.1
Danger labels (ADR)	: 4.1



IMDG

Transport hazard class(es) (IMDG)	: 4.1
Danger labels (IMDG)	: 4.1



IATA

Transport hazard class(es) (IATA)	: 4.1
Hazard labels (IATA)	: 4.1



ADN

Transport hazard class(es) (ADN)	: 4.1
Danger labels (ADN)	: 4.1



RID

Transport hazard class(es) (RID)	: 4.1
Danger labels (RID)	: 4.1



NAPHTHALENE FOR SYNTHESIS

Safety Data Sheet

14.4. Packing group

Packing group (ADR)	: III
Packing group (IMDG)	: III
Packing group (IATA)	: III
Packing group (ADN)	: III
Packing group (RID)	: III

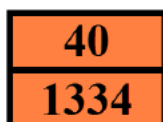
14.5. Environmental hazards

Dangerous for the environment	: Yes
Marine pollutant	: Yes
Other information	: No supplementary information available

14.6. Special precautions for user

- Overland transport

Classification code (ADR)	: F1
Special provision (ADR)	: 501
Limited quantities (ADR)	: 5kg
Excepted quantities (ADR)	: E1
Packing instructions (ADR)	: P002, IBC08, LP02, R001
Special packing provisions (ADR)	: B3
Mixed packing provisions (ADR)	: MP10
Portable tank and bulk container instructions (ADR)	: T1, BK1, BK2
Portable tank and bulk container special provisions (ADR)	: TP33
Tank code (ADR)	: SGAV
Vehicle for tank carriage	: AT
Transport category (ADR)	: 3
Special provisions for carriage - Bulk (ADR)	: VC1, VC2, AP1
Hazard identification number (Kemler No.)	: 40
Orange plates	:



Tunnel restriction code (ADR)	: E
EAC code	: 1Z

- Transport by sea

Special provision (IMDG)	: 948, 967
Limited quantities (IMDG)	: 5 kg
Excepted quantities (IMDG)	: E1
Packing instructions (IMDG)	: P002, LP02
IBC packing instructions (IMDG)	: IBC08
IBC special provisions (IMDG)	: B3
Tank instructions (IMDG)	: T1, BK2, BK3
Tank special provisions (IMDG)	: TP33
EmS-No. (Fire)	: F-A
EmS-No. (Spillage)	: S-G
Stowage category (IMDG)	: A
Stowage and handling (IMDG)	: SW23
MFAG-No	: 133

NAPHTHALENE FOR SYNTHESIS

Safety Data Sheet

- Air transport

PCA Excepted quantities (IATA)	: E1
PCA Limited quantities (IATA)	: Y443
PCA limited quantity max net quantity (IATA)	: 10kg
PCA packing instructions (IATA)	: 446
PCA max net quantity (IATA)	: 25kg
CAO packing instructions (IATA)	: 449
CAO max net quantity (IATA)	: 100kg
ERG code (IATA)	: 3L

- Inland waterway transport

Classification code (ADN)	: F1
Special provisions (ADN)	: 501
Limited quantities (ADN)	: 5 kg
Excepted quantities (ADN)	: E1
Carriage permitted (ADN)	: B
Equipment required (ADN)	: PP
Provisions for carriage in bulk (ADN)	: CO01
Number of blue cones/lights (ADN)	: 0

- Rail transport

Classification code (RID)	: F1
Special provision (RID)	: 501
Limited quantities (RID)	: 5kg
Excepted quantities (RID)	: E1
Packing instructions (RID)	: P002, IBC08, LP02, R001
Special packing provisions (RID)	: B3
Mixed packing provisions (RID)	: MP10
Portable tank and bulk container instructions (RID)	: T1, BK1, BK2
Portable tank and bulk container special provisions (RID)	: TP33
Tank codes for RID tanks (RID)	: SGAV
Transport category (RID)	: 3
Special provisions for carriage – Packages (RID)	: W1
Special provisions for carriage – Bulk (RID)	: VC1, VC2, AP1
Colis express (express parcels) (RID)	: CE11
Hazard identification number (RID)	: 40

14.7. Transport in bulk according to Annex II of MARPOL 73/78 and the IBC Code

Not applicable

SECTION 15: Regulatory information

15.1. Safety, health and environmental regulations/legislation specific for the substance or mixture

15.1.1. EU-Regulations

No REACH Annex XVII restrictions

NAPHTHALENE FOR SYNTHESIS is not on the REACH Candidate List

NAPHTHALENE FOR SYNTHESIS is not on the REACH Annex XIV List

NAPHTHALENE FOR SYNTHESIS

Safety Data Sheet

15.1.2. National regulations

Germany

- AwSV/VwVwS Annex reference : Water hazard class (WGK) 3, strongly hazardous to water (Classification according to VwVwS, Annex 3; WGK No 269)
- 12th Ordinance Implementing the Federal Immission Control Act - 12.BImSchV : Is not subject of the 12. BImSchV (Hazardous Incident Ordinance)

Denmark

- Class for fire hazard : Class III-1
- Store unit : 50 liter
- Classification remarks : Flammable according to the Danish Ministry of Justice; Emergency management guidelines for the storage of flammable liquids must be followed
- Recommendations Danish Regulation : Young people below the age of 18 years are not allowed to use the product
Pregnant/breastfeeding women working with the product must not be in direct contact with the product
The requirements from the Danish Working Environment Authorities regarding work with carcinogens must be followed during use and disposal

15.2. Chemical safety assessment

No additional information available

SECTION 16: Other information

Full text of R-, H- and EUH-phrases:

Acute Tox. 4 (Oral)	Acute toxicity (oral), Category 4
Aquatic Chronic 1	Hazardous to the aquatic environment — Chronic Hazard, Category 1
Carc. 2	Carcinogenicity, Category 2
Flam. Sol. 1	Flammable solids, Category 1
H228	Flammable solid
H302	Harmful if swallowed
H351	Suspected of causing cancer
H410	Very toxic to aquatic life with long lasting effects
R22	Harmful if swallowed
R40	Limited evidence of a carcinogenic effect
R50/53	Very toxic to aquatic organisms, may cause long-term adverse effects in the aquatic environment
N	Dangerous for the environment
Xn	Harmful

NAPHTHALENE FOR SYNTHESIS

Safety Data Sheet

This information is based on our current knowledge and is intended to describe the product for the purposes of health, safety and environmental requirements only. It should not therefore be construed as guaranteeing any specific property of the product