

SODIUM PENTACHLOROPHENATE EXTRA PURE MSDS

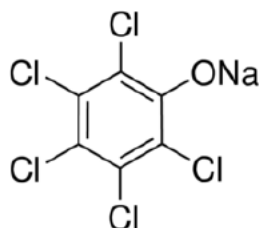
CAS No: 131-52-2 MSDS

MATERIAL SAFETY DATA SHEET (MSDS)

SECTION 1: Identification of the substance/mixture and of the company/undertaking

1.1. Product identifier

Product form : Substance
:
CAS No : 131-52-2
Product code : 05963
Chemical structure :



Synonyms : Pentachlorophenol Sodium Salt

1.2. Relevant identified uses of the substance or mixture and uses advised against

1.2.1. Relevant identified uses

Use of the substance/mixture : Laboratory chemicals, Manufacture of substances

1.2.2. Uses advised against

No additional information available

1.3. Details of the supplier of the safety data sheet

Labogens Fine Chem Industries
1st Floor , Above Bank of India, Guru Vihar , Rahon Road,
Ludhiana Pb. (141007)
+91 9316777775, +91 7707855700
sales@labogens.com - www.Labogens.com

1.4. Emergency telephone number

Emergency number : +91 7707855700 (9:00am - 6:00 pm)

SECTION 2: Hazards identification

2.1. Classification of the substance or mixture

Classification according to Regulation (EC) No. 1272/2008 [CLP]

Acute toxicity (oral), H301
Category 3
Acute toxicity (dermal), H311
Category 3
Acute toxicity (inhal.), H330
Category 2
Skin corrosion/irritation, H315
Category 2
Serious eye damage/eye irritation, Category 2 H319

SODIUM PENTACHLOROPHENATE Extra Pure

Safety Data Sheet

Carcinogenicity, Category 2 H351
Specific target organ toxicity — Single exposure, Category 3, Respiratory tract irritation H335
Hazardous to the aquatic environment — Chronic Hazard, Category 1 H410

Full text of classification categories and H statements : see section 16

Classification according to Directive 67/548/EEC or 1999/45/EC

Carc.Cat.3; R40
T+; R26
T; R24/25
Xi; R36/37/38
N; R50/53

Full text of R-phrases: see section 16

Adverse physicochemical, human health and environmental effects

No additional information available

2.2. Label elements

Labelling according to Regulation (EC) No. 1272/2008 [CLP]

Hazard pictograms (CLP) :



GHS06



GHS08



GHS09

Signal word (CLP) :

Danger

Hazard statements (CLP) :

H301+H311 - Toxic if swallowed or in contact with skin
H315 - Causes skin irritation
H319 - Causes serious eye irritation
H330 - Fatal if inhaled
H335 - May cause respiratory irritation
H351 - Suspected of causing cancer
H410 - Very toxic to aquatic life with long lasting effects

Precautionary statements (CLP) :

P260 - Do not breathe dust/fume/gas/mist/vapours/spray
P273 - Avoid release to the environment
P280 - Wear protective gloves/protective clothing/eye protection/face protection
P284 - [In case of inadequate ventilation] wear respiratory protection
P305+P351+P338 - IF IN EYES: Rinse cautiously with water for several minutes. Remove contact lenses, if present and easy to do. Continue rinsing
P310 - Immediately call a POISON CENTER or doctor/physician

2.3. Other hazards

No additional information available

SODIUM PENTACHLOROPHENATE Extra Pure

Safety Data Sheet

SECTION 3: Composition/information on ingredients

3.1. Substance

Name : SODIUM PENTACHLOROPHENATE Extra Pure
CAS No : 131-52-2

Full text of R- and H-phrases: see section 16

3.2. Mixture

Not applicable

SECTION 4: First aid measures

4.1. Description of first aid measures

First-aid measures after inhalation : Remove victim to fresh air and keep at rest in a position comfortable for breathing. Call a POISON CENTER or doctor/physician if you feel unwell.

First-aid measures after skin contact : Immediately call a POISON CENTER or doctor/physician. Remove/Take off immediately all contaminated clothing. Wash with plenty of soap and water. Specific measures (see ... on this label). Wash contaminated clothing before reuse. If skin irritation occurs: Get medical advice/attention. Specific treatment (see ... on this label).

First-aid measures after eye contact : Rinse cautiously with water for several minutes. Remove contact lenses, if present and easy to do. Continue rinsing. If eye irritation persists: Get medical advice/attention.

First-aid measures after ingestion : Rinse mouth. Obtain emergency medical attention. Immediately call a POISON CENTER or doctor/physician. Specific treatment (see ... on this label).

4.2. Most important symptoms and effects, both acute and delayed

Symptoms/injuries after inhalation : May cause respiratory irritation. Fatal if inhaled.

Symptoms/injuries after skin contact : Toxic in contact with skin. Causes skin irritation.

Symptoms/injuries after eye contact : Causes serious eye irritation.

Symptoms/injuries after ingestion : Toxic if swallowed.

Chronic symptoms : Suspected carcinogen.

4.3. Indication of any immediate medical attention and special treatment needed

Treat symptomatically.

SECTION 5: Firefighting measures

5.1. Extinguishing media

Suitable extinguishing media : dry chemical powder, alcohol-resistant foam, carbon dioxide (CO₂).

Unsuitable extinguishing media : Do not use a heavy water stream.

5.2. Special hazards arising from the substance or mixture

No additional information available

5.3. Advice for firefighters

Protection during firefighting : Do not attempt to take action without suitable protective equipment.

SECTION 6: Accidental release measures

6.1. Personal precautions, protective equipment and emergency procedures

6.1.1. For non-emergency personnel

Emergency procedures : Evacuate unnecessary personnel.

SODIUM PENTACHLOROPHENATE Extra Pure

Safety Data Sheet

6.1.2. For emergency responders

Protective equipment	: Use personal protective equipment as required.
Emergency procedures	: Stop release.

6.2. Environmental precautions

Very toxic to aquatic life with long lasting effects.

6.3. Methods and material for containment and cleaning up

Methods for cleaning up	: Clear up rapidly by scoop or vacuum.
-------------------------	--

6.4. Reference to other sections

No additional information available

SECTION 7: Handling and storage

7.1. Precautions for safe handling

Precautions for safe handling	: Avoid breathing dust/fume/gas/mist/vapours/spray. Use only outdoors or in a well-ventilated area.
Hygiene measures	: Do not eat, drink or smoke when using this product. Wash ... thoroughly after handling.

7.2. Conditions for safe storage, including any incompatibilities

Storage conditions	: Keep container tightly closed. Store in original container. Store in a dry place. Protect from moisture.
--------------------	--

7.3. Specific end use(s)

No additional information available

SECTION 8: Exposure controls/personal protection

8.1. Control parameters

No additional information available

8.2. Exposure controls

Hand protection	: protective gloves
Eye protection	: Chemical goggles or safety glasses
Skin and body protection	: Wear suitable protective clothing
Respiratory protection	: Wear respiratory protection

SECTION 9: Physical and chemical properties

9.1. Information on basic physical and chemical properties

Physical state	: Solid
Molecular mass	: 288.4 g/mol
Colour	: Buff coloured crystalline.
Odour	: No data available
Odour threshold	: No data available
pH	: No data available

SODIUM PENTACHLOROPHENATE Extra Pure

Safety Data Sheet

Relative evaporation rate (butylacetate=1)	: No data available
Melting point	: 300 °C
Freezing point	: No data available
Boiling point	: No data available
Flash point	: No data available
Auto-ignition temperature	: No data available
Decomposition temperature	: No data available
Flammability (solid, gas)	: No data available
Vapour pressure	: No data available
Relative vapour density at 20 °C	: No data available
Relative density	: No data available
Solubility	: No data available
Log Pow	: No data available
Viscosity, kinematic	: No data available
Viscosity, dynamic	: No data available
Explosive properties	: No data available
Oxidising properties	: No data available
Explosive limits	: No data available

9.2. Other information

No additional information available

SECTION 10: Stability and reactivity

10.1. Reactivity

No additional information available

10.2. Chemical stability

Stable under normal conditions.

10.3. Possibility of hazardous reactions

No additional information available

10.4. Conditions to avoid

Direct sunlight. Air contact. Moisture.

10.5. Incompatible materials

No additional information available

10.6. Hazardous decomposition products

No additional information available

SODIUM PENTACHLOROPHENATE Extra Pure

Safety Data Sheet

SECTION 11: Toxicological information

11.1. Information on toxicological effects

Acute toxicity : Oral: Toxic if swallowed. Dermal: Toxic in contact with skin. Inhalation: Fatal if inhaled.

Skin corrosion/irritation : Causes skin irritation.
Serious eye damage/irritation : Causes serious eye irritation.
Respiratory or skin sensitisation : Not classified
Germ cell mutagenicity : Not classified
Carcinogenicity : Suspected of causing cancer.

Reproductive toxicity : Not classified
Specific target organ toxicity (single exposure) : May cause respiratory irritation.

Specific target organ toxicity (repeated exposure) : Not classified

Aspiration hazard : Not classified

Potential adverse human health effects and symptoms : Toxic if swallowed. Toxic in contact with skin.

SECTION 12: Ecological information

12.1. Toxicity

Ecology - water : Very toxic to aquatic life with long lasting effects.

12.2. Persistence and degradability

SODIUM PENTACHLOROPHENATE Extra Pure (131-52-2)

Persistence and degradability	May cause long-term adverse effects in the environment.
-------------------------------	---

12.3. Bioaccumulative potential

No additional information available

12.4. Mobility in soil

No additional information available

12.5. Results of PBT and vPvB assessment

No additional information available

SODIUM PENTACHLOROPHENATE Extra Pure

Safety Data Sheet

12.6. Other adverse effects

No additional information available

SECTION 13: Disposal considerations

13.1. Waste treatment methods

Product/Packaging disposal recommendations : Dispose of contents/container to ...

Ecology - waste materials : Hazardous waste due to toxicity.

SECTION 14: Transport information

In accordance with ADR / RID / IMDG / IATA / ADN

14.1. UN number

UN-No. (ADR) : 2567

UN-No. (IMDG) : 2567

UN-No.(IATA) : 2567

UN-No.(ADN) : 2567

UN-No. (RID) : 2567

14.2. UN proper shipping name

Proper Shipping Name (ADR) : SODIUM PENTACHLOROPHENATE

Proper Shipping Name (IMDG) : SODIUM PENTACHLOROPHENATE

Proper Shipping Name (IATA) : SODIUM PENTACHLOROPHENATE

Proper Shipping Name (ADN) : SODIUM PENTACHLOROPHENATE

Proper Shipping Name (RID) : SODIUM PENTACHLOROPHENATE

Transport document description (ADR) : UN 2567 SODIUM PENTACHLOROPHENATE, 6.1, II, (D/E), ENVIRONMENTALLY HAZARDOUS

Transport document description (IMDG) : UN 2567 SODIUM PENTACHLOROPHENATE, 6.1, II, MARINE POLLUTANT/ENVIRONMENTALLY HAZARDOUS

Transport document description (IATA) : UN 2567 SODIUM PENTACHLOROPHENATE, 6.1, II, ENVIRONMENTALLY HAZARDOUS

Transport document description (ADN) : UN 2567 SODIUM PENTACHLOROPHENATE, 6.1, II, ENVIRONMENTALLY HAZARDOUS

Transport document description (RID) : UN 2567 SODIUM PENTACHLOROPHENATE, 6.1, II, ENVIRONMENTALLY HAZARDOUS

14.3. Transport hazard class(es)

ADR

Transport hazard class(es) (ADR) : 6.1

Danger labels (ADR) : 6.1



IMDG

Transport hazard class(es) (IMDG) : 6.1

Danger labels (IMDG) : 6.1

SODIUM PENTACHLOROPHENATE Extra Pure

Safety Data Sheet



IATA

Transport hazard class(es) (IATA) : 6.1

Hazard labels (IATA) : 6.1



ADN

Transport hazard class(es) (ADN) : 6.1

Danger labels (ADN) : 6.1



RID

Transport hazard class(es) (RID) : 6.1

Danger labels (RID) : 6.1



14.4. Packing group

Packing group (ADR) : II

Packing group (IMDG) : II

Packing group (IATA) : II

Packing group (ADN) : II

Packing group (RID) : II

14.5. Environmental hazards

Dangerous for the environment : Yes

Marine pollutant : Yes

Other information : No supplementary information available

14.6. Special precautions for user

- Overland transport

Classification code (ADR) : T2

Limited quantities (ADR) : 500g

Excepted quantities (ADR) : E4

Packing instructions (ADR) : P002, IBC08

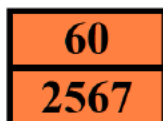
Special packing provisions (ADR) : B4

Mixed packing provisions (ADR) : MP10

SODIUM PENTACHLOROPHENATE Extra Pure

Safety Data Sheet

Portable tank and bulk container instructions (ADR)	: T3
Portable tank and bulk container special provisions (ADR)	: TP33
Tank code (ADR)	: SGAH
Tank special provisions (ADR)	: TU15, TE19
Vehicle for tank carriage	: AT
Transport category (ADR)	: 2
Special provisions for carriage - Packages (ADR)	: V11
Special provisions for carriage - Loading, unloading and handling (ADR)	: CV13, CV28
Special provisions for carriage - Operation (ADR)	: S9, S19
Hazard identification number (Kemler No.)	: 60
Orange plates	:



Tunnel restriction code (ADR)	: D/E
EAC code	: 2X

- Transport by sea

Limited quantities (IMDG)	: 500 g
Excepted quantities (IMDG)	: E4
Packing instructions (IMDG)	: P002
IBC packing instructions (IMDG)	: IBC08
IBC special provisions (IMDG)	: B2, B4
Tank instructions (IMDG)	: T3
Tank special provisions (IMDG)	: TP33
EmS-No. (Fire)	: F-A
EmS-No. (Spillage)	: S-A
Stowage category (IMDG)	: A
MFAG-No	: 154

- Air transport

PCA Excepted quantities (IATA)	: E4
PCA Limited quantities (IATA)	: Y644
PCA limited quantity max net quantity (IATA)	: 1kg
PCA packing instructions (IATA)	: 669
PCA max net quantity (IATA)	: 25kg
CAO packing instructions (IATA)	: 676
CAO max net quantity (IATA)	: 100kg
ERG code (IATA)	: 6L

- Inland waterway transport

Classification code (ADN)	: T2
Special provisions (ADN)	: 802
Limited quantities (ADN)	: 500 g
Excepted quantities (ADN)	: E4
Equipment required (ADN)	: PP, EP
Number of blue cones/lights (ADN)	: 2

- Rail transport

Classification code (RID)	: T2
Limited quantities (RID)	: 500g

SODIUM PENTACHLOROPHENATE Extra Pure

Safety Data Sheet

Excepted quantities (RID)	: E4
Packing instructions (RID)	: P002, IBC08
Special packing provisions (RID)	: B4
Mixed packing provisions (RID)	: MP10
Portable tank and bulk container instructions (RID)	: T3
Portable tank and bulk container special provisions (RID)	: TP33
Tank codes for RID tanks (RID)	: SGAH
Special provisions for RID tanks (RID)	: TU15
Transport category (RID)	: 2
Special provisions for carriage – Packages (RID)	: W11
Special provisions for carriage – Loading and unloading (RID)	: CW13, CW28, CW31
Colis express (express parcels) (RID)	: CE9
Hazard identification number (RID)	: 60

14.7. Transport in bulk according to Annex II of MARPOL 73/78 and the IBC Code

Not applicable

SECTION 15: Regulatory information

15.1. Safety, health and environmental regulations/legislation specific for the substance or mixture

15.1.1. EU-Regulations

No REACH Annex XVII restrictions

SODIUM PENTACHLOROPHENATE Extra Pure is not on the REACH Candidate List

SODIUM PENTACHLOROPHENATE Extra Pure is not on the REACH Annex XIV List

15.1.2. National regulations

Germany

AwSV/VwVwS Annex reference : Water hazard class (WGK) 3, strongly hazardous to water (Classification according to VwVwS, Annex 2; WGK No 381)

12th Ordinance Implementing the Federal Immission Control Act - 12.BImSchV : Is not subject of the 12. BImSchV (Hazardous Incident Ordinance)

Denmark

Recommendations Danish Regulation : Young people below the age of 18 years are not allowed to use the product
Pregnant/breastfeeding women working with the product must not be in direct contact with the product
The requirements from the Danish Working Environment Authorities regarding work with carcinogens must be followed during use and disposal

SODIUM PENTACHLOROPHENATE Extra Pure

Safety Data Sheet

15.2. Chemical safety assessment

No additional information available

SECTION 16: Other information

Full text of R-, H- and EUH-phrases:

Acute Tox. 2 (Inhalation)	Acute toxicity (inhal.), Category 2
Acute Tox. 3 (Dermal)	Acute toxicity (dermal), Category 3
Acute Tox. 3 (Oral)	Acute toxicity (oral), Category 3
Aquatic Chronic 1	Hazardous to the aquatic environment — Chronic Hazard, Category 1
Carc. 2	Carcinogenicity, Category 2
Eye Irrit. 2	Serious eye damage/eye irritation, Category 2
Skin Irrit. 2	Skin corrosion/irritation, Category 2
STOT SE 3	Specific target organ toxicity — Single exposure, Category 3, Respiratory tract irritation
H301	Toxic if swallowed
H311	Toxic in contact with skin
H315	Causes skin irritation
H319	Causes serious eye irritation
H330	Fatal if inhaled
H335	May cause respiratory irritation
H351	Suspected of causing cancer
H410	Very toxic to aquatic life with long lasting effects
R24/25	Toxic in contact with skin and if swallowed
R26	Very toxic by inhalation
R36/37/38	Irritating to eyes, respiratory system and skin
R40	Limited evidence of a carcinogenic effect
R50/53	Very toxic to aquatic organisms, may cause long-term adverse effects in the aquatic environment
N	Dangerous for the environment
T	Toxic
T+	Very toxic
Xi	Irritant

This information is based on our current knowledge and is intended to describe the product for the purposes of health, safety and environmental requirements only. It should not therefore be construed as guaranteeing any specific property of the product