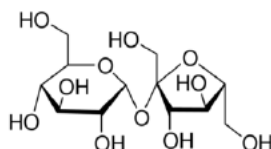


### MATERIAL SAFETY DATA SHEET (MSDS)

#### SECTION 1: Identification of the substance/mixture and of the company/undertaking

##### 1.1. Product identifier

Product form : Substance  
 EC no : 200-334-9  
 CAS No : 57-50-1  
 Product code : 06155  
 Formula : C<sub>12</sub>H<sub>22</sub>O<sub>11</sub>  
 Chemical structure :



Synonyms : α-D-Glucopyranosyl β-D-fructofuranoside / α-D-Glc-(1→2)-β-D-Fru / D(+)-Saccharose / Sugar / β-D-Fructofuranosyl-α-D-glucopyranoside  
 REACH authorization exemptions : Exempted from REACH registration

##### 1.2. Relevant identified uses of the substance or mixture and uses advised against

###### 1.2.1. Relevant identified uses

Use of the substance/mixture : Laboratory chemicals, Manufacture of substances

###### 1.2.2. Uses advised against

No additional information available

##### 1.3. Details of the supplier of the safety data sheet

Labogens Fine Chem Industries  
 1st Floor , Above Bank of India, Guru Vihar , Rahon Road,  
 Ludhiana Pb. (141007)  
 +91 9316777775, +91 7707855700  
[sales@labogens.com](mailto:sales@labogens.com) - [www.Labogens.com](http://www.Labogens.com)

##### 1.4. Emergency telephone number

Emergency number : +91 7707855700 (9:00am - 6:00 pm)

#### SECTION 2: Hazards identification

##### 2.1. Classification of the substance or mixture

Classification according to Regulation (EC) No. 1272/2008 [CLP]

Not classified

# SUCROSE EXTRA PURE

## Safety Data Sheet

Classification according to Directive 67/548/EEC or 1999/45/EC

Not classified

Adverse physicochemical, human health and environmental effects

No additional information available

### 2.2. Label elements

Labelling according to Regulation (EC) No. 1272/2008 [CLP]

No labelling applicable

### 2.3. Other hazards

No additional information available

## SECTION 3: Composition/information on ingredients

### 3.1. Substance

Name	: SUCROSE EXTRA PURE
CAS No	: 57-50-1
EC no	: 200-334-9

Full text of R- and H-phrases: see section 16

### 3.2. Mixture

Not applicable

## SECTION 4: First aid measures

### 4.1. Description of first aid measures

No additional information available

### 4.2. Most important symptoms and effects, both acute and delayed

No additional information available

### 4.3. Indication of any immediate medical attention and special treatment needed

No additional information available

## SECTION 5: Firefighting measures

### 5.1. Extinguishing media

No additional information available

### 5.2. Special hazards arising from the substance or mixture

No additional information available

### 5.3. Advice for firefighters

No additional information available

# SUCROSE EXTRA PURE

## Safety Data Sheet

### SECTION 6: Accidental release measures

#### 6.1. Personal precautions, protective equipment and emergency procedures

##### 6.1.1. For non-emergency personnel

Emergency procedures : Evacuate unnecessary personnel.

##### 6.1.2. For emergency responders

Protective equipment : Use personal protective equipment as required.

Emergency procedures : Stop release.

#### 6.2. Environmental precautions

Avoid release to the environment.

#### 6.3. Methods and material for containment and cleaning up

Methods for cleaning up : Clear up rapidly by scoop or vacuum.

#### 6.4. Reference to other sections

No additional information available

### SECTION 7: Handling and storage

#### 7.1. Precautions for safe handling

Precautions for safe handling : Do not get in eyes, on skin, or on clothing.

Hygiene measures : Wash hands and other exposed areas with mild soap and water before eating, drinking or smoking and when leaving work.

#### 7.2. Conditions for safe storage, including any incompatibilities

Storage conditions : Store in original container. Keep container tightly closed. Store in a dry place. Protect from moisture.

#### 7.3. Specific end use(s)

No additional information available

### SECTION 8: Exposure controls/personal protection

#### 8.1. Control parameters

No additional information available

#### 8.2. Exposure controls

Hand protection : protective gloves

Eye protection : Chemical goggles or safety glasses

Skin and body protection : Wear suitable protective clothing

Respiratory protection : Wear respiratory protection

### SECTION 9: Physical and chemical properties

#### 9.1. Information on basic physical and chemical properties

Physical state : Solid

Molecular mass : 342.3 g/mol

Colour : Colorless crystals.

# SUCROSE EXTRA PURE

## Safety Data Sheet

Odour	: odourless.
Odour threshold	: No data available
pH	: 5.5 - 7 at 342 g/l at 25 °C
Relative evaporation rate (butylacetate=1)	: No data available
Melting point	: 185 - 187
Freezing point	: No data available
Boiling point	: No data available
Flash point	: 93.3 °C
Auto-ignition temperature	: No data available
Decomposition temperature	: No data available
Flammability (solid, gas)	: No data available
Vapour pressure	: No data available
Relative vapour density at 20 °C	: No data available
Relative density	: No data available
Solubility	: Water: 342 g/l at 20 °C - completely soluble
Log Pow	: -3.7
Viscosity, kinematic	: No data available
Viscosity, dynamic	: No data available
Explosive properties	: No data available
Oxidising properties	: No data available
Explosive limits	: No data available

### 9.2. Other information

No additional information available

## SECTION 10: Stability and reactivity

### 10.1. Reactivity

No additional information available

### 10.2. Chemical stability

Stable under normal conditions.

### 10.3. Possibility of hazardous reactions

No additional information available

### 10.4. Conditions to avoid

Direct sunlight. Air contact. Moisture.

### 10.5. Incompatible materials

No additional information available

### 10.6. Hazardous decomposition products

No additional information available

# SUCROSE EXTRA PURE

## Safety Data Sheet

### SECTION 11: Toxicological information

#### 11.1. Information on toxicological effects

Acute toxicity : Not classified

Skin corrosion/irritation : Not classified  
pH: 5.5 - 7 at 342 g/l at 25 °C

Serious eye damage/irritation : Not classified  
pH: 5.5 - 7 at 342 g/l at 25 °C

Respiratory or skin sensitisation : Not classified

Germ cell mutagenicity : Not classified

Carcinogenicity : Not classified

Reproductive toxicity : Not classified

Specific target organ toxicity (single exposure) : Not classified

Specific target organ toxicity (repeated exposure) : Not classified

Aspiration hazard : Not classified

### SECTION 12: Ecological information

#### 12.1. Toxicity

No additional information available

#### 12.2. Persistence and degradability

No additional information available

#### 12.3. Bioaccumulative potential

##### SUCROSE EXTRA PURE (57-50-1)

Log Pow	-3.7
---------	------

#### 12.4. Mobility in soil

No additional information available

#### 12.5. Results of PBT and vPvB assessment

No additional information available

#### 12.6. Other adverse effects

No additional information available

# SUCROSE EXTRA PURE

## Safety Data Sheet

### SECTION 13: Disposal considerations

#### 13.1. Waste treatment methods

No additional information available

### SECTION 14: Transport information

In accordance with ADR / RID / IMDG / IATA / ADN

#### 14.1. UN number

UN-No. (ADR)	: Not applicable
UN-No. (IMDG)	: Not applicable
UN-No.(IATA)	: Not applicable
UN-No.(ADN)	: Not applicable
UN-No. (RID)	: Not applicable

#### 14.2. UN proper shipping name

Proper Shipping Name (ADR)	: Not applicable
Proper Shipping Name (IMDG)	: Not applicable
Proper Shipping Name (IATA)	: Not applicable
Proper Shipping Name (ADN)	: Not applicable
Proper Shipping Name (RID)	: Not applicable

#### 14.3. Transport hazard class(es)

##### ADR

Transport hazard class(es) (ADR)	: Not applicable
----------------------------------	------------------

##### IMDG

Transport hazard class(es) (IMDG)	: Not applicable
-----------------------------------	------------------

##### IATA

Transport hazard class(es) (IATA)	: Not applicable
-----------------------------------	------------------

##### ADN

Transport hazard class(es) (ADN)	: Not applicable
----------------------------------	------------------

##### RID

Transport hazard class(es) (RID)	: Not applicable
----------------------------------	------------------

#### 14.4. Packing group

Packing group (ADR)	: Not applicable
Packing group (IMDG)	: Not applicable
Packing group (IATA)	: Not applicable
Packing group (ADN)	: Not applicable
Packing group (RID)	: Not applicable

#### 14.5. Environmental hazards

Dangerous for the environment	: No
Marine pollutant	: No
Other information	: No supplementary information available

# SUCROSE EXTRA PURE

## Safety Data Sheet

### 14.6. Special precautions for user

#### - Overland transport

No data available

#### - Transport by sea

No data available

#### - Air transport

No data available

#### - Inland waterway transport

No data available

#### - Rail transport

No data available

### 14.7. Transport in bulk according to Annex II of MARPOL 73/78 and the IBC Code

Not applicable

## SECTION 15: Regulatory information

### 15.1. Safety, health and environmental regulations/legislation specific for the substance or mixture

#### 15.1.1. EU-Regulations

No REACH Annex XVII restrictions

SUCROSE EXTRA PURE is not on the REACH Candidate List

SUCROSE EXTRA PURE is not on the REACH Annex XIV List

#### 15.1.2. National regulations

##### Germany

12th Ordinance Implementing the Federal Immission Control Act - 12.BImSchV : Is not subject of the 12. BImSchV (Hazardous Incident Ordinance)

##### Denmark

Class for fire hazard : Class III-1

Store unit : 50 liter

Classification remarks : Flammable according to the Danish Ministry of Justice; Emergency management guidelines for the storage of flammable liquids must be followed

### 15.2. Chemical safety assessment

No additional information available

## SECTION 16: Other information

# SUCROSE EXTRA PURE

## Safety Data Sheet

---

*This information is based on our current knowledge and is intended to describe the product for the purposes of health, safety and environmental requirements only. It should not therefore be construed as guaranteeing any specific property of the product*