

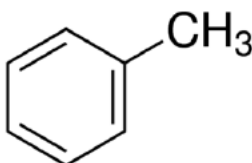
**CAS-No.: 108-88-3 MSDS**

## MATERIAL SAFETY DATA SHEET (MSDS)

### SECTION 1: Identification of the substance/mixture and of the company/undertaking

#### 1.1. Product identifier

Product form : Substance  
 EC Index-No. : 601-021-00-3  
 EC-No. : 203-625-9  
 CAS-No. : 108-88-3  
 Product code : 00328  
 Formula : C<sub>7</sub>H<sub>8</sub> - (C(CH<sub>3</sub>)CHCHCHCHCH)  
 Chemical structure :



#### 1.2. Relevant identified uses of the substance or mixture and uses advised against

##### 1.2.1. Relevant identified uses

Industrial/Professional use spec : Industrial  
 For professional use only  
 Use of the substance/mixture : Laboratory chemicals

##### 1.2.2. Uses advised against

No additional information available

#### 1.3. Details of the supplier of the safety data sheet

Labogens Fine Chem Industries  
 1st Floor , Above Bank of India, Guru Vihar , Rahon Road,  
 Ludhiana Pb. (141007)  
 +91 9316777775, +91 7707855700  
[sales@labogens.com](mailto:sales@labogens.com) - [www.Labogens.com](http://www.Labogens.com)

#### 1.4. Emergency telephone number

Emergency number : +91 7707855700 (9:00am - 6:00 pm)

### SECTION 2: Hazards identification

#### 2.1. Classification of the substance or mixture

##### Classification according to Regulation (EC) No. 1272/2008 [CLP]

Flammable liquids, H225  
 Category 2  
 Skin corrosion/irritation, H315  
 Category 2  
 Reproductive toxicity, H361d  
 Category 2  
 Specific target organ H336

# TOLUENE SPECIALLY DRIED AR

## Safety Data Sheet

toxicity — Single exposure, Category 3, Narcosis  
Specific target organ toxicity — Repeated exposure, Category 2  
Aspiration hazard, Category 1

H373  
H304

Full text of H statements : see section 16

### Classification according to Directive 67/548/EEC [DSD] or 1999/45/EC [DPD]

Repr.Cat.3; R63  
F; R11  
Xn; R65  
Xn; R48/20  
Xi; R38  
R67

Full text of R-phrases: see section 16

### Adverse physicochemical, human health and environmental effects

No additional information available

## 2.2. Label elements

### Labelling according to Regulation (EC) No. 1272/2008 [CLP]

Hazard pictograms (CLP)



Signal word (CLP)

: Danger

Hazard statements (CLP)

: H225 - Highly flammable liquid and vapour.  
H304 - May be fatal if swallowed and enters airways.  
H315 - Causes skin irritation.  
H336 - May cause drowsiness or dizziness.  
H361d - Suspected of damaging the unborn child.  
H373 - May cause damage to organs through prolonged or repeated exposure.

Precautionary statements (CLP)

: P210 - Keep away from heat, hot surfaces, sparks, open flames and other ignition sources. No smoking.  
P260 - Do not breathe vapours, dust, fume, gas.  
P280 - Wear protective gloves, protective clothing, eye protection, face protection.  
P301+P310 - IF SWALLOWED: Immediately call a doctor.  
P331 - Do NOT induce vomiting.

## 2.3. Other hazards

No additional information available

# TOLUENE SPECIALLY DRIED AR

## Safety Data Sheet

### SECTION 3: Composition/information on ingredients

#### 3.1. Substances

Name	: TOLUENE SPECIALLY DRIED AR
CAS-No.	: 108-88-3
EC-No.	: 203-625-9
EC Index-No.	: 601-021-00-3

Full text of R- and H-statements: see section 16

#### 3.2. Mixtures

Not applicable

### SECTION 4: First aid measures

#### 4.1. Description of first aid measures

First-aid measures after inhalation	: Remove person to fresh air and keep comfortable for breathing. Call a POISON CENTER/doctor if you feel unwell.
First-aid measures after skin contact	: Wash with plenty of water/.... Wash contaminated clothing before reuse. Get medical advice/attention.
First-aid measures after eye contact	: Rinse cautiously with water for several minutes. Remove contact lenses, if present and easy to do. Continue rinsing. Get medical advice/attention.
First-aid measures after ingestion	: Immediately call a POISON CENTER/doctor. Rinse mouth.

#### 4.2. Most important symptoms and effects, both acute and delayed

Symptoms/effects	: Causes damage to organs.
Symptoms/effects after inhalation	: May cause respiratory irritation. May cause drowsiness or dizziness.
Symptoms/effects after skin contact	: Causes skin irritation.
Symptoms/effects after ingestion	: May be fatal if swallowed and enters airways.

#### 4.3. Indication of any immediate medical attention and special treatment needed

No additional information available

### SECTION 5: Firefighting measures

#### 5.1. Extinguishing media

Suitable extinguishing media	: Carbon dioxide. Dry powder. Foam. Water spray.
Unsuitable extinguishing media	: Do not use extinguishing media containing water.

#### 5.2. Special hazards arising from the substance or mixture

Fire hazard	: Highly flammable liquid and vapour.
Explosion hazard	: May form flammable/explosive vapour-air mixture.

#### 5.3. Advice for firefighters

Protection during firefighting	: Do not enter fire area without proper protective equipment, including respiratory protection.
--------------------------------	---

### SECTION 6: Accidental release measures

#### 6.1. Personal precautions, protective equipment and emergency procedures

General measures	: Remove ignition sources. Use special care to avoid static electric charges. No open flames. No smoking.
------------------	---

##### 6.1.1. For non-emergency personnel

Emergency procedures	: Evacuate unnecessary personnel.
----------------------	-----------------------------------

# TOLUENE SPECIALLY DRIED AR

## Safety Data Sheet

### 6.1.2. For emergency responders

Protective equipment	: Use personal protective equipment as required.
Emergency procedures	: Ventilate area.

### 6.2. Environmental precautions

Avoid release to the environment.

### 6.3. Methods and material for containment and cleaning up

Methods for cleaning up	: On land, sweep or shovel into suitable containers. Collect spillage.
-------------------------	--

### 6.4. Reference to other sections

No additional information available

## SECTION 7: Handling and storage

### 7.1. Precautions for safe handling

Additional hazards when processed	: Handle empty containers with care because residual vapours are flammable.
Precautions for safe handling	: Keep away from sources of ignition - No smoking. Use only non-sparking tools. Avoid contact with skin and eyes. Use only outdoors or in a well-ventilated area. Do not breathe vapours.
Hygiene measures	: Wash hands and other exposed areas with mild soap and water before eating, drinking or smoking and when leaving work. Do not eat, drink or smoke when using this product.

### 7.2. Conditions for safe storage, including any incompatibilities

Technical measures	: Proper grounding procedures to avoid static electricity should be followed. Ground/bond container and receiving equipment.
Storage conditions	: Keep in fireproof place. Keep container tightly closed.
Incompatible materials	: Heat sources.

### 7.3. Specific end use(s)

No additional information available

## SECTION 8: Exposure controls/personal protection

### 8.1. Control parameters

No additional information available

### 8.2. Exposure controls

Hand protection	: Protective gloves
Eye protection	: Chemical goggles or safety glasses
Skin and body protection	: Wear suitable protective clothing
Respiratory protection	: Where exposure through inhalation may occur from use, respiratory protection equipment is recommended. [In case of inadequate ventilation] wear respiratory protection.

## SECTION 9: Physical and chemical properties

### 9.1. Information on basic physical and chemical properties

Physical state	: Liquid
Molecular mass	: 92.14 g/mol

# TOLUENE SPECIALLY DRIED AR

## Safety Data Sheet

Colour	: Clear Colorless.
Odour	: aromatic benzene-like.
Odour threshold	: No data available
pH	: No data available
Relative evaporation rate (butylacetate=1)	: 2.24
Melting point	: -93 °C
Freezing point	: No data available
Boiling point	: 110 - 111 °C
Flash point	: 4 °C
Auto-ignition temperature	: 535 °C
Decomposition temperature	: No data available
Flammability (solid, gas)	: Flammable Highly flammable liquid and vapour.
Vapour pressure	: 22 at 20°C
Relative vapour density at 20 °C	: 3.14
Relative density	: No data available
Density	: 0.86 g/cm <sup>3</sup>
Solubility	: Water: 0.05 @ 20°C (gm/100gm water)
Log Pow	: No data available
Viscosity, kinematic	: No data available
Viscosity, dynamic	: No data available
Explosive properties	: No data available
Oxidising properties	: No data available
Explosive limits	: 0.012 - 0.07 vol %

### 9.2. Other information

No additional information available

## SECTION 10: Stability and reactivity

### 10.1. Reactivity

No additional information available

### 10.2. Chemical stability

Stable under normal conditions.

### 10.3. Possibility of hazardous reactions

No additional information available

### 10.4. Conditions to avoid

Open flame. Heat. Sparks.

# TOLUENE SPECIALLY DRIED AR

## Safety Data Sheet

### 10.5. Incompatible materials

No additional information available

### 10.6. Hazardous decomposition products

May release flammable gases.

## SECTION 11: Toxicological information

### 11.1. Information on toxicological effects

Acute toxicity : Not classified

Skin corrosion/irritation : Causes skin irritation.

Serious eye damage/irritation : Not classified

Respiratory or skin sensitisation : Not classified

Germ cell mutagenicity : Not classified

Carcinogenicity : Not classified

Reproductive toxicity : Suspected of damaging the unborn child.

STOT-single exposure : May cause drowsiness or dizziness.

STOT-repeated exposure : May cause damage to organs through prolonged or repeated exposure.

Aspiration hazard : May be fatal if swallowed and enters airways.

## SECTION 12: Ecological information

### 12.1. Toxicity

No additional information available

### 12.2. Persistence and degradability

No additional information available

### 12.3. Bioaccumulative potential

No additional information available

### 12.4. Mobility in soil

No additional information available

### 12.5. Results of PBT and vPvB assessment

No additional information available

# TOLUENE SPECIALLY DRIED AR

## Safety Data Sheet

### 12.6. Other adverse effects

No additional information available

## SECTION 13: Disposal considerations

### 13.1. Waste treatment methods

Product/Packaging disposal recommendations	: Dispose of contents/container to hazardous or special waste collection point, in accordance with local, regional, national and/or international regulation.
Additional information	: Handle empty containers with care because residual vapours are flammable.
Ecology - waste materials	: Hazardous waste due to toxicity.

## SECTION 14: Transport information

In accordance with ADR / RID / IMDG / IATA / ADN

### 14.1. UN number

UN-No. (ADR)	: 1294
UN-No. (IMDG)	: 1294
UN-No. (IATA)	: 1294
UN-No. (ADN)	: 1294
UN-No. (RID)	: 1294

### 14.2. UN proper shipping name

Proper Shipping Name (ADR)	: TOLUENE
Proper Shipping Name (IMDG)	: TOLUENE
Proper Shipping Name (IATA)	: Toluene
Proper Shipping Name (ADN)	: TOLUENE
Proper Shipping Name (RID)	: TOLUENE
Transport document description (ADR)	: UN 1294 TOLUENE, 3, II, (D/E)
Transport document description (IMDG)	: UN 1294 TOLUENE, 3, II (7°C c.c.)
Transport document description (IATA)	: UN 1294 Toluene, 3, II
Transport document description (ADN)	: UN 1294 TOLUENE, 3, II
Transport document description (RID)	: UN 1294 TOLUENE, 3, II

### 14.3. Transport hazard class(es)

#### ADR

Transport hazard class(es) (ADR)	: 3
Danger labels (ADR)	: 3



#### IMDG

Transport hazard class(es) (IMDG)	: 3
Danger labels (IMDG)	: 3



#### IATA

# TOLUENE SPECIALLY DRIED AR

## Safety Data Sheet

Transport hazard class(es) (IATA) : 3  
Hazard labels (IATA) : 3



### ADN

Transport hazard class(es) (ADN) : 3  
Danger labels (ADN) : 3



### RID

Transport hazard class(es) (RID) : 3  
Danger labels (RID) : 3



#### 14.4. Packing group

Packing group (ADR) : II  
Packing group (IMDG) : II  
Packing group (IATA) : II  
Packing group (ADN) : II  
Packing group (RID) : II

#### 14.5. Environmental hazards

Dangerous for the environment : No  
Marine pollutant : No  
Other information : No supplementary information available

#### 14.6. Special precautions for user

##### - Overland transport

Classification code (ADR) : F1  
Limited quantities (ADR) : 1I  
Excepted quantities (ADR) : E2  
Packing instructions (ADR) : P001, IBC02, R001  
Mixed packing provisions (ADR) : MP19  
Portable tank and bulk container instructions (ADR) : T4  
Portable tank and bulk container special provisions (ADR) : TP1  
Tank code (ADR) : LGBF  
Vehicle for tank carriage : FL  
Transport category (ADR) : 2



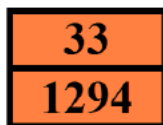
# TOLUENE SPECIALLY DRIED AR

## Safety Data Sheet

Special provisions for carriage - Operation : S2, S20  
(ADR)

Hazard identification number (Kemler No.) : 33

Orange plates :



Tunnel restriction code (ADR)

: D/E

EAC code

: 3YE

### - Transport by sea

Limited quantities (IMDG) : 1 L

Excepted quantities (IMDG) : E2

Packing instructions (IMDG) : P001

IBC packing instructions (IMDG) : IBC02

Tank instructions (IMDG) : T4

Tank special provisions (IMDG) : TP1

EmS-No. (Fire) : F-E

EmS-No. (Spillage) : S-D

Stowage category (IMDG) : B

Flash point (IMDG) : 7°C c.c.

Properties and observations (IMDG) : Colourless liquid with a benzene-like odour. Flashpoint: 7°C c.c. Explosive limits: 1.27% to 7% Immiscible with water.

MFAG-No : 130

### - Air transport

PCA Excepted quantities (IATA) : E2

PCA Limited quantities (IATA) : Y341

PCA limited quantity max net quantity (IATA) : 1L

PCA packing instructions (IATA) : 353

PCA max net quantity (IATA) : 5L

CAO packing instructions (IATA) : 364

CAO max net quantity (IATA) : 60L

ERG code (IATA) : 3L

### - Inland waterway transport

Classification code (ADN) : F1

Limited quantities (ADN) : 1 L

Excepted quantities (ADN) : E2

Carriage permitted (ADN) : T

Equipment required (ADN) : PP, EX, A

Ventilation (ADN) : VE01

Number of blue cones/lights (ADN) : 1

### - Rail transport

Classification code (RID) : F1

Limited quantities (RID) : 1L

Excepted quantities (RID) : E2

Packing instructions (RID) : P001, IBC02, R001

Mixed packing provisions (RID) : MP19

Portable tank and bulk container instructions (RID) : T4

Portable tank and bulk container special provisions (RID) : TP1

Tank codes for RID tanks (RID) : LGBF

# TOLUENE SPECIALLY DRIED AR

## Safety Data Sheet

Transport category (RID)	: 2
Colis express (express parcels) (RID)	: CE7
Hazard identification number (RID)	: 33

### 14.7. Transport in bulk according to Annex II of MARPOL 73/78 and the IBC Code

Not applicable

## SECTION 15: Regulatory information

### 15.1. Safety, health and environmental regulations/legislation specific for the substance or mixture

#### 15.1.1. EU-Regulations

No REACH Annex XVII restrictions

TOLUENE SPECIALLY DRIED AR is not on the REACH Candidate List

TOLUENE SPECIALLY DRIED AR is not on the REACH Annex XIV List

#### 15.1.2. National regulations

##### Germany

Reference to AwSV	: Water hazard class (WGK) 2, significant hazard to water (Classification according to AwSV; ID No. 194)
12th Ordinance Implementing the Federal Immission Control Act - 12.BImSchV	: Is not subject of the 12. BImSchV (Hazardous Incident Ordinance)

##### Netherlands

SZW-lijst van kankerverwekkende stoffen	: The substance is not listed
SZW-lijst van mutagene stoffen	: The substance is not listed
NIET-limitatieve lijst van voor de voortplanting giftige stoffen – Borstvoeding	: The substance is not listed
NIET-limitatieve lijst van voor de voortplanting giftige stoffen – Vruchtbaarheid	: The substance is not listed
NIET-limitatieve lijst van voor de voortplanting giftige stoffen – Ontwikkeling	: TOLUENE SPECIALLY DRIED AR is listed

##### Denmark

Class for fire hazard	: Class I-1
Store unit	: 1 liter
Classification remarks	: F <Flam. Liq. 2>; Emergency management guidelines for the storage of flammable liquids must be followed
Recommendations Danish Regulation	: Young people below the age of 18 years are not allowed to use the product Pregnant/breastfeeding women working with the product must not be in direct contact with the product The requirements from the Danish Working Environment Authorities regarding work with carcinogens must be followed during use and disposal

# TOLUENE SPECIALLY DRIED AR

## Safety Data Sheet

### 15.2. Chemical safety assessment

No additional information available

### SECTION 16: Other information

Full text of R-, H- and EUH-statements:

Asp. Tox. 1	Aspiration hazard, Category 1
Flam. Liq. 2	Flammable liquids, Category 2
Repr. 2	Reproductive toxicity, Category 2
Skin Irrit. 2	Skin corrosion/irritation, Category 2
STOT RE 2	Specific target organ toxicity — Repeated exposure, Category 2
STOT SE 3	Specific target organ toxicity — Single exposure, Category 3, Narcosis
H225	Highly flammable liquid and vapour.
H304	May be fatal if swallowed and enters airways.
H315	Causes skin irritation.
H336	May cause drowsiness or dizziness.
H361d	Suspected of damaging the unborn child.
H373	May cause damage to organs through prolonged or repeated exposure.
R11	Highly flammable
R38	Irritating to skin
R48/20	Harmful: danger of serious damage to health by prolonged exposure through inhalation
R63	Possible risk of harm to the unborn child
R65	Harmful: may cause lung damage if swallowed
R67	Vapours may cause drowsiness and dizziness
F	Highly flammable
Xi	Irritant
Xn	Harmful

*This information is based on our current knowledge and is intended to describe the product for the purposes of health, safety and environmental requirements only. It should not therefore be construed as guaranteeing any specific property of the product*